



INFLATABLE BOAT

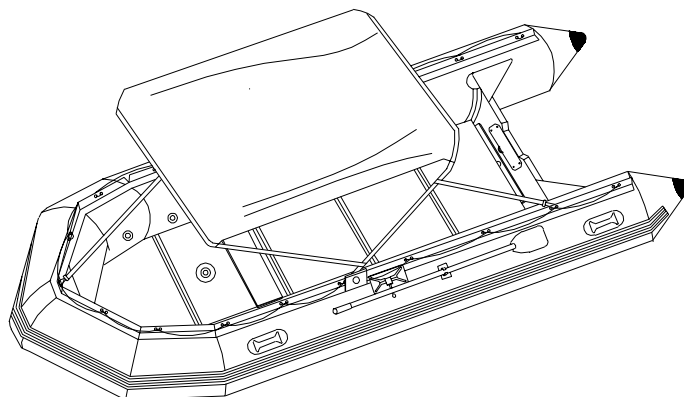
OWNER'S MANUAL (TRANSOM BOAT)



Dealer Stamp :

About your new Transom Boat

Thank you for deciding to buy a new Transom Boat. You will get many years of use and pleasure out of this boat. These boats can be inflated and assembled in about half an hour, making trips from the car to the water practical without a trailer. The Transom Boats have several unique features which make them solid, reliable boats. The Transom Boats are composed of 1000 denier inflatable hull with attached transom and several types of floorboard system. Below is a brief overview of the structure of the boat. Detailed assembly instructions are on the following pages.



1. Standard Equipment

Neplus	Seabon	Armada (350A, 380A)
Box 1 : * Boat hull and slat floorboard packed in boat bag * Repair kit * Towing rope (4m) * Oars * Foot pump * Aluminum seat * Owners manual * Other optional accessories	Box 1 : * Boat hull packed in boat bag * Repair kit * Towing rope (4m) * Oars * Foot pump * Aluminum seat * Floorboard ①, ②, ③, ④ packed in floorboard bag * Stringer 500mm (4pcs) * Owners manual * Other optional accessories	Box 1 : * Boat hull packed in boat bag * Repair kit * Towing rope (4m) * Oars * Foot pump * Aluminum seat * Floorboard ⑥, ①, ②, ③, ④ packed in floorboard bag * Stringer 500mm (2pcs) * Stringer 700mm (2pcs) * Owners manual * Other optional accessories
Armada (420A, 450A)	Armada Rescue (420AR, 450AR)	Armada Rescue (480AR, 500AR)
Box 1 : * Boat hull packed in boat bag Box 2 : * Repair kit * Towing rope (4m) * Oars * Foot pump * Aluminum seat * Floorboard ⑥, ①, ②, ③, ④, ⑤ packed in floorboard bag * Stringer 500mm (2pcs) * Stringer 700mm (4pcs) * Owners manual * Other optional accessories	Box 1 : * Boat hull packed in boat bag Box 2 : * Repair kit * Towing rope (4m) * Oars * Foot pump * Floorboard ⑥, ①, ②, ③, ④, ⑤ packed in floorboard bag * Stringer 500mm (2pcs) * Stringer 700mm (4pcs) * Owners manual * Other optional accessories	Box 1 : * Boat hull packed in boat bag Box 2 : * Repair kit * Towing rope (4m) * Oars * Foot pump * Floorboard ⑥, ①, ②, ③, ④, ⑤ packed in floorboard bag * Stringer 700mm (6pcs) * Owners manual * Other optional accessories

Yacht Tender (Drop stitch Floor)	SE model (Plastic floorboard)
Box 1 : * Boat hull and drop stitch floor packed in boat bag * Repair kit * Towing rope (4m) * Oars * Foot pump * Aluminum seat * Owners manual * Other optional accessories	Box 1 : * Boat hull packed in boat bag Box 2 : * Repair kit * Towing rope (4m) * Oars * Foot pump * Aluminum seat * Plastic floorboard packed in floorboard bag SE290N : FB-1, FB-3L and FB-4 SE320S : FB-1, FB-2, FB-3S and FB-4 SE380A : FB-1, FB-2, FB-3L and FB-4 SE420AR : FB-1, FB-2, FB-3L, FB3S and FB-4 * Stringer (4pcs) per each model * Uplift connector bars (2pcs) * Owners manual * Other optional accessories

2. The 1000 Denier Hull Material

The 1000 denier hull material is a rugged, solid material which operates with a 3.6 PSI working pressure. This high working pressure gives the Transom Boats a solid, rugged hull which allows them to operate with larger engines and run in rougher conditions.

3. The Hull Air Compartmentation

All Transom Boats have more than three air chambers in the main hull. Some models have an air chamber in the inflatable keel, and the drop stitch floor. These air chambers are totally separated and ensure buoyancy in the event of a single chamber failure.

4. The One-Way Valve

The Transom Boats use the one-way valve, a proven design that has been used for 25 years. This simple, rugged one-way valve makes inflation easy. The inner valve design allows air to flow into the hull but not out, and outer valve cap makes the seal permanent. The plastic stem on the inner valve allows the boat to be deflated. Push in and turn to release the air. Make sure the plastic stem is in the out position for inflation.

5. Rear Drain Valve

All Transom Boats have a rear drain valve to drain water from the inside of the hull. This has a plug to keep it totally watertight when not in use. To use the drain valve, remove the plug and gently accelerate to get your boat in a bow-high attitude. Water will rush to the rear of the boat and drain out the valve. Replace plug when finished. Another option is to pull the boat up on a beach or boat ramp and drain on land.

6. Foot Pump

Foot Pump can deliver the air pressure needed to fully inflate your boat. To inflate, insert the hose into the fitting one the pump marked "outlet". We firmly recommend you always carry your foot pump on board for safety. But for more pressure or easier inflating, you can order our brand new "hand piston pump" at a little more cost.

7. Fomax Transom

All Transom Boats now have marine plywood transoms that are completely enclosed in fomax sheets, forming a waterproof cocoon, keeping the transom secure from the damaging effects of water seepage better than any paint possibly could.

Assembly Instruction

1. Unfold the Hull

Clear a flat space (making sure it is clean and free of sharp objects) and unfold your boat. Remove the hull from its box and take it out of the boat bag. Unroll the hull so it laid out flat.

2. Inflate slightly

The Transom Boats can be inflated either with our high pressure foot pump or with other electric pump. The electric pump can inflate the boats to a moderate pressure and save a lot of time, but all of these boats will need to be finished off with the high pressure foot pump. Inflate the three hull chambers to approximately 30% full in order to make floorboard insertion easier.

Note : Use only our pumps to inflate your boat. Do not use an air compressor. Damage to your boat caused by over inflation from an air compressor is not covered by your warranty.

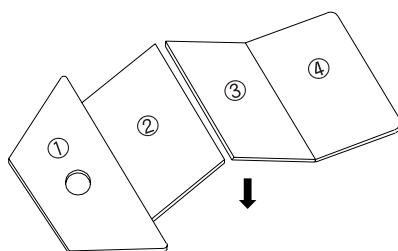
3. Floorboard Assembly

a. Seabon model

a-1. Place floorboard ① at bow part, ④ at transom part, and ② + ③

** Make sure that keel valve is located at the center of ① board's hole.*

a-2. Press down ② + ③ at the same time to be jointed well and flatly.



b. Armada & Rescue model :

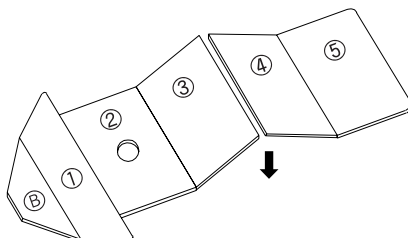
b-1. Place floorboard as follows :

- 5 Floorboards : ⑥, ①, ④, and ② + ③.

- 6 Floorboards : ⑥, ① ② ⑤ and ③ + ④

** Make sure that keel valve is located at the center of ② board's hole.*

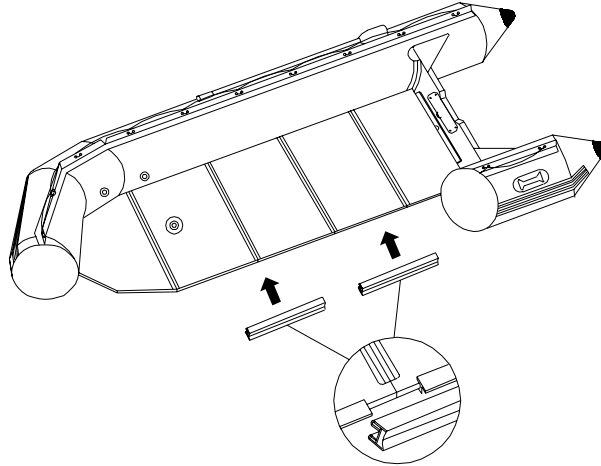
b-2. Press down ② + ③ at the same time for 5 floorboards boat and ③ + ④ at the same time for 6 floorboards boat to be jointed well and flatly.



c. Stringers

Insert stringers into side edges of floorboards.

* For easy fitting of stringers, place oar under boat hull.



Note : Somewhat hard to assemble at the first time, but after two or three times of using a boat, it will be easier to assemble.

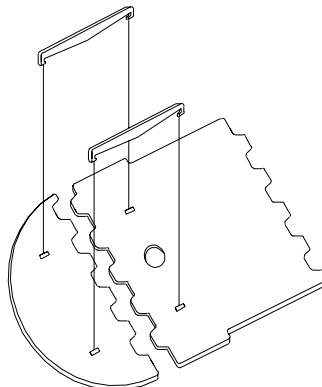
Note : Don't do this with bare feet, and keep your fingers and toes out of the way so that you don't get pinched.

d. SE model (Plastic floorboard) :

All the SE models have four plastic floorboards, numbered FB-1 through FB-4.

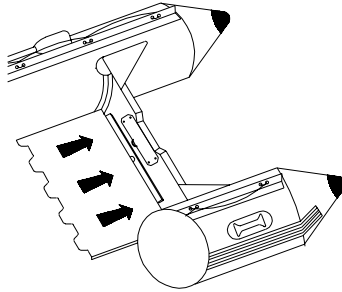
d-1. FB-1 and FB-2 :

Locate the FB-1 and FB-2 floorboards as well as the Uplift Connector Bars (see diagram below) FB-1 and FB-2 join at a slight up angle. The Uplift Connector Bars keep the two floorboards at this angle.



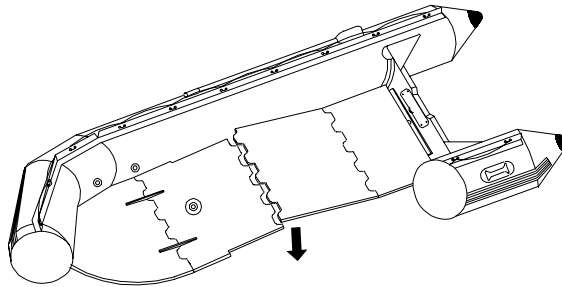
Slide FB-1 and FB-2 together as shown above. Hook the Uplift Connector Bar into the FB-2 floorboard, and use a moderate pressure on the FB-1 to pull it into position so that the Uplift Connector Bar will hold both boards snugly together. Repeat with the other Uplift Connector Bar. Slide the assembled boards into the bow of the boat. The SE290N does not have a FB-2 floorboard and Uplift Connector Bars. Simply insert the FB-1 into the bow of the boat.

d-2. FB-4 Rear Floorboard



The FB-4 is the rearmost floorboard which has a smooth rear edge and interlocking grooves on the front edge. Place FB-4 at the rear of the hull and slide under the transom lip. Sit in the hull and force the FB-4 under the transom lip with your feet.

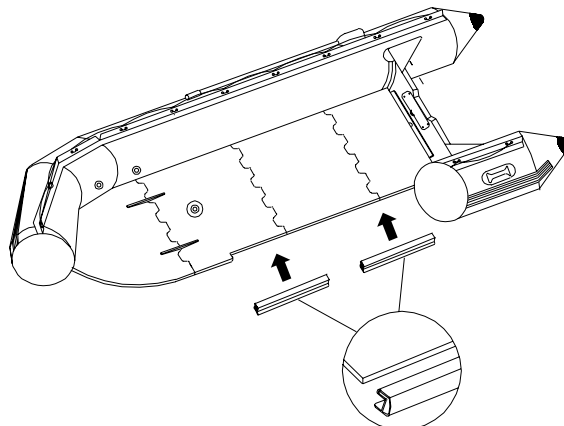
d-3. FB-3 - Please note, FB-3 comes small & large sizes (FB-3S & FB-3L).



The last floorboard to be inserted is FB-3. Insert FB-3 so it meshes with FB-4 at the stern of the boat and overlaps FB-2(or, in the case of the SE290N, the FB-1). Lift the ends of FB-2 (or FB-1) and FB-3 and connect the floorboards forming an inverted "V". Step down on the joint. (see above diagram) The boards will snap into place.

d-4. Stringers

All the SE models have two side stringers on each side for a total of 4. These sturdy aluminum parts serve to strengthen the structure of the boat and keep the floorboards tight. Insert the smaller of the two side stringers first at the bow of the boat. Use a rolling motion to put the stringers in place.

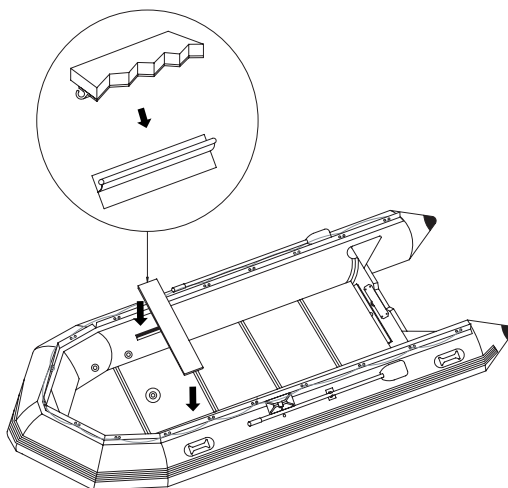


e. Yacht Tender model (Drop stitch floor) :

- e-1. Put and flat the drop stitch floor in the boat. Especially pay your attention to insert the edge of the drop stitch floor into between the floor and inside of the tube.
- e-2. Place the keel valve fit to the hole of the drop stitch floor.
- e-3. Firstly, inflate the drop stitch floor tightly up to 6psi.
- e-4. And inflate the keel until the drop stitch floor is straightened out well. You may need to step on the drop stitch floor to make it straight.

4. Aluminum Seat

Inflate the rear chambers to 90% of their inflated size and slide the plastic parts at the bottom of the aluminum seat into the fabric holders on your Transom Boat.



5. Finish Inflation

Inflate all hull chambers to 100%, or 3.6psi. Using our high pressure pump, this air pressure will be generated by applying about 130lbs. of force to the pump.

Note : The model having inflatable keel will plane better when the keel is 80% inflated.

6. Deflation

Remove the outer valve caps to expose the grey plastic stem on the inner valve. Pressing the grey stem into release air pressure, and turn it to lock the valve in the open position. Deflate each hull chamber to 50-75% before completely deflating any of the air chambers. Remove the floorboards by first removing the side stringers. Remove and disassemble floorboards next.

Note : Do not deflate one chamber fully while others are fully inflated. This could damage the bulkheads of your boat.

Accessories

1. Seat Bag

The optional Seat Bag fits neatly under the aluminum seat. Peel off the velcro flap on top of the bag and wrap around the aluminum seat. Secure the velcro flap on the other side of the aluminum seat so that the bag rests on the floor below the aluminum seat.

2. Bow Bag

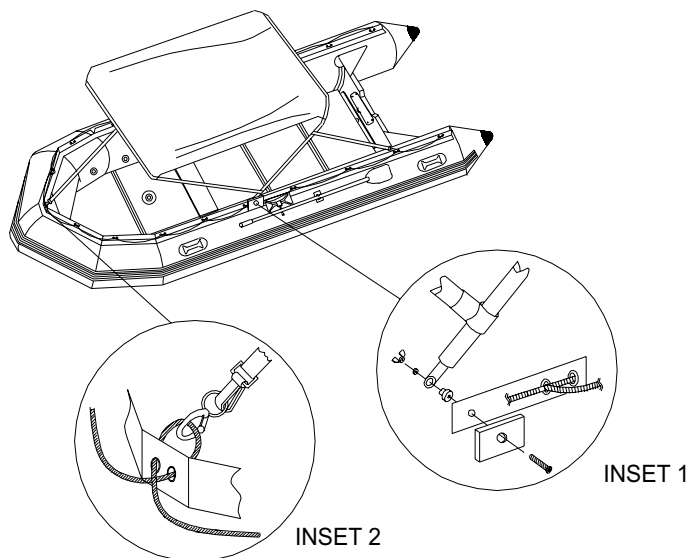
The optional Bow Bag fits in the bow of your boat and is secured by strings.

3. Sun/Rain Canopy

The optional Sun/Rain Canopy is easily installed. The canopy has two support tubes on each side which form a V and anchor near the center of the boat. The canopy is held in place by a bow line, two center brackets, and two stern lines.

a. Canopy Parts List

- Canopy fabric with cutout on underside of bow
- V-Brace with stern strap (2pcs)
- Hardware bag
- Large metal clip (3pcs)
- Bow strap
- Bow tube (with male plugs on each end)
- Stern tube (with female plugs on each end)



b. Attach mounting bracket to hull

The first step in fastening the canopy to your boat is to make a small hole with a sharp awl in the flange of material on top of the tubes on each side of the boat (see inset 1). Measure 50" forward of the transom and make a small puncture half way up the flange. Remove the hardware bag from your canopy box and attach bracket to the hull as shown above.

Note : You will be attaching your canopy later to this bracket. For now just attach the mounting bracket without the canopy to make assembly easier.

c. Insert curved tubes in canopy fabric

Remove the two 48" curved tubes from your canopy box, and note that the bow tube has a male plug on each end while the stern tube has two female plugs. Remove the canopy fabric from its plastic container. Note that the bow side of the fabric has a U-shaped cutout in the sleeve to accommodate the bow strap. The bow tube needs to be inserted in the canopy fabric so that the U-shaped cutout in the canopy is facing down, and the snap-lock buttons are facing forward. Insert the bow tube through the bow sleeve of the canopy material up to the cutout. Locate the black bow strap, and slide the bow tube through the loop in the bow strap and then through the other half of the canopy fabric. Insert the stern tube at the stern side of the canopy so that the drilled holes for the snap-lock buttons are facing aft.

d. Snap V-braces into curved tubes and attach canopy

Snap the V-braces into the curved tubes which you have just inserted into the canopy. Now place your canopy on top of your inflated Transom Boat so the small bow line is forward and the stern lines are aft. Clip the bow line with the one of the large metal clips to the bow rope. Clip the stern clips to the first loop in the rope lacing, also with the attached large metal clips.

Motor installation

The maximum rated horsepower for our Transom Boats are:

MODEL		MAX (hp)	MODEL		MAX (hp)	MODEL		MAX (hp)
Neplus	230N	4	Armada	350A	15	Yacht Tender	YT230	4
	260N	6		380A	25		YT245	6
	290N	10		420A	35		YT265	8
	P240N	4		450A	40		YT285	10
	P260N	6	420AR	35	YT310		15	
Seabon	270S	10	Armada Rescue	450AR	40	SE model	SE290N	10
	290S	15		480AR	50		SE320S	15
	320S	15		500AR	50		SE380A	25
	P260S	8		520AR	50		SE420AR	35

* These models (480AR, 500AR and 520AR) are for Long Shaft Motor. (Motor Transom Height : 22.4")

Note : If you install a motor larger than the maximum rated horsepower for your boat, you might have control problems and risk serious injury. Never exceed the maximum rated horsepower.

Read the instruction manual supplied by the outboard motor manufacturer. All outboards are slightly different, and some require special installation procedures. Below is a general outline:

- Set the motor on tilt and tilt the mounting bracket.
- Place the motor in the center of the transom.
- Screw the mounting brackets securely to the transom.

Note : If the mounting brackets are not tightly secured to the transom, the motor could loosen in use or even fall from your boat. Make sure they are tight.

Troubleshooting

1. Leaks

If you are losing air pressure, and it isn't colder temperatures, check the boat over for leaks, starting with the valves. The best tool to find leaks is soapy water in a spray bottle. A leaking valve is rare, but if you do find a leak we can send you a replacement valve. We recommend mixing soap and water in a spray bottle. Spray around the valve. If you see bubbles forming, check your valve seating and base and be sure the valve insert is screwed tight. If you continue to have problems it's probably time to order new valves. Replacement of the whole valve can be done with a simple tool that comes with the replacement valve.

2. Finding Punctures

If the boat is losing air, and all the valves are good you probably have a small puncture. Small punctures can be repaired easily and permanently. Spray around inside and outside of the hull until air bubbles mark the position of the leak. If you have no luck finding a slow leak with air bubbles, inflate the boat to maximum air pressure and try to listen to find the leak. If you can narrow the area down, return with a spray bottle to identify the source of the leak. Making small repairs. Punctures less than 1/8" in size can be repaired simply without a patch. Deflate your boat, then clean and dry area to be repaired. Apply a small drop of glue to cover the puncture, and let dry 12 hours. If you need to get on the water sooner, let dry 30 minutes and then inflate the boat, inflating the compartment with the repair only 3/4 full. This repair might not be permanent so add a drop again at a later date to make it permanent.

3. Rips or Tears

Your Transom Boats come with a repair kit as standard equipment. If you no longer have your repair kit, you can order a new one from your dealer. Cut a piece of repair material large enough to overlap the damaged area by approximately 1/2", and round off the edges. Apply our glue to the under side of patch and around the area to be repaired. Too much glue will interfere with a proper repair. Allow adhesive to become tacky for 2-4 minutes, and then place patch on the damaged area. Use a weight to apply 3-5 lbs. of pressure for 12 hours. After patch has dried, apply glue around the edges for a complete seal (dry 4 hours).

4. Large and Difficult Repairs

If you have a difficult repair, give our office a call and we will advise you on the best way to fix your boat.

Using your Transom Boat

1. Rowing

The Transom Boats are designed as motorboats, but they can be rowed if the engine fails. Take some time to practice rowing so you will be prepared in the unlikely event of an engine failure. The oars are attached to swivelling oarlocks / oarclasp which allow for easy rowing. Snap the rear section of the oar out of the oarclasp and use the forward oarlock to help row. You can also remove the oar from the forward oarlock by unscrewing the plastic nut on the oar.

2. Motoring & Safety

The Transom Boats are responsive and quick under power, yet turn and track very well. All boats have their unique handling characteristics, so take time to familiarize yourself with how your maneuvers in various conditions. Basic seamanship is beyond the scope of this owner's manual, but we would like to go over a few fundamentals. It is your responsibility to be aware of and comply with all relevant safety regulations. In all water sports you should have reasonable swimming ability. Although your Transom Boats have been used in ocean expeditions, we don't recommend using the Transom Boats out of sight of land. If you are going out in open waters, you should stay reasonably close to other boats and always carry flares and a good supply of fresh

water. A marine band transceiver and a GPS receiver will provide added security on your journey. Always respect the sea and the weather, as both can change rapidly and have surprised even the most seasoned mariner. Always carry enough Personal Flotation Devices. Not only is it the law, but from our point of view, it is just plain foolish not to have PFD's for everyone aboard. Please use U.S. Coast Guard or C.E. approved life jackets, as this is your assurance that the life jackets can provide sufficient buoyancy in the water. We strongly suggest that all boaters enroll in one of the excellent water safety courses offered by the Power Squadron or Coast Guard Auxiliary in your area.

Some Other Points To Remember

- After 2 or 3 days there may be a small decrease of pressure due to temperature change. If so, add a few pumps of air to each chamber.
- Before undertaking a long trip, inflate the boat for a full 24 hours to be sure all chambers are completely airtight.
- Do not allow children to drive the boat unsupervised by adults.
- Avoid sharp objects when coming to dock or shore.
- Always bring your oars along snapped in place.
- When you see water have come into the boat, check the following:
 - ① Is the drain valve open?
 - ② Is the diaphragm in the drain valve working properly?
 - ③ Has it rained recently?
 - ④ Is there a hole in the floor?
- Regarding cleaning & storage:
 - ① Hose off sand and dirt and let dry before packing away.
 - ② Do not use harsh chemical cleaners.
 - ③ Do not store in extreme temperatures(i.e. above 150°F or below -10°F).
 - ④ Store in a clean and dry place.

Warranty Registration Card

1. General

Please fill out and mail in the Warranty Registration Card supplied in your order right away. You will void your warranty by not filing the registration card with us. Be sure to enter the Serial #(HIN code = the 12 digit number). A small patch of serial number are found in each boat. You can find a serial number patch by looking through inside of the tube or stern area.

2. Care and Preservation

There is very little that you have to do to keep your boat in good condition for many years. You may store it inflated or deflated. If you leave it outside, raise it up off the ground. If it is going to be in direct sunlight or exposed to leaves, berries or rain, cover it with a tarp.(We do not recommend hanging the boat). If you leave it in the water, you will probably have to drain out rainwater at times. If you store it in a closet, basement or garage, we suggest you pick a cool, dry spot, making sure the boat is clean and dry before you pack it up - or mold can accumulate. That is all you need to keep your boat in mint condition for years to come. Most dirt can be removed with a garden hose, a sponge and mild soap. SoftScrub works exceedingly well. Make sure the boat for long periods, Do not sprinkle with powders. Do not store in an area where it is likely to be exposed to extreme temperatures.(above 150°F or below -10°F)

Guarantee / Warranty

We("COMPANY") shall warrant the new products, accessories and parts manufactured and/or supplied by the COMPANY("Products") to be free from defects in material and workmanship, and this warranty shall not cover any commercial and/or professional use of Products.

1. This Warranty Period for the Products is counted from the shipment date of COMPANY and is specified hereunder:
 - ① The base of fabrics : Five (5) years
 - ② Seam constructions : Three (3) years
 - ③ Workmanship : Two (2) years
 - ④ Accessories & parts : One (1) year
2. The owner's registration form is the only valid registration identification. If any Products are found to be defective, Customer shall return to the distributor or COMPANY for inspection and/or repair as instructed with a copy of the registration form.
3. COMPANY's obligation under this warranty shall be limited to, at its option, either repair or replace the same without charge or provide a credit or refund based on the original price, or less a reasonable amount for actual use. Except as expressly agreed between both Parties, Customer must return Products for repair at its own expense. The return transportation of the repaired or replaced Products from COMPANY to the destination by Customer shall be paid by COMPANY.
4. Since this warranty applies to defects in material and workmanship, it does not apply to normal wear and tear of fabric or wood finishes or to damage caused by :1) neglect, lack of preventive care, modification, accident, abnormal operation, unauthorized repairs, use in a manner not in accordance with applicable Specifications, racing competition, 2) use of any accessories or parts not manufactured or supplied by COMPANY, or 3) haul out, launching, storage charge, telephone or rental charge, inconvenience or loss of time and income.

All incidental and consequential damages are excluded from this warranty and implied warranty is limited to the life of the warranty.

Warranty Registration Card

This card must be completed and signed, and returned to your dealer within 10 days of date of purchase in order for the warranty on your new transom boat to be valid.

Customer _____
Address _____
City _____ Country _____ Zip _____
Phone _____ Date of Purchase _____

Dealer _____
Address _____
City _____ Country _____ Zip _____
Model _____ Serial # _____

By signing this warranty card, I acknowledge that I have read and understood all cautions and warnings relating to the use of this product, and I understand that any occupants or users of this product risk, injury or death.

Customer Signature _____ Date _____